

# Portrait of Blossom - work stages

November 2012



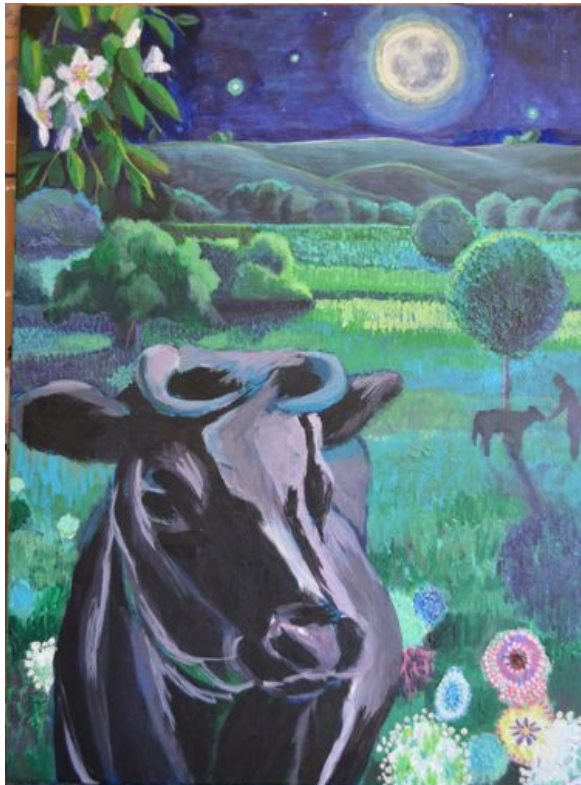
Compositional sketch



Blue underpainting; positioning elements; transferring accurate drawing of cow from photograph using grid



Working on background landscape and flowers



Working on Blossom's form and tones



Refining Blossom detail and foreground elements

[www.annetaylorart.webs.com](http://www.annetaylorart.webs.com)

M: 027 489 0704